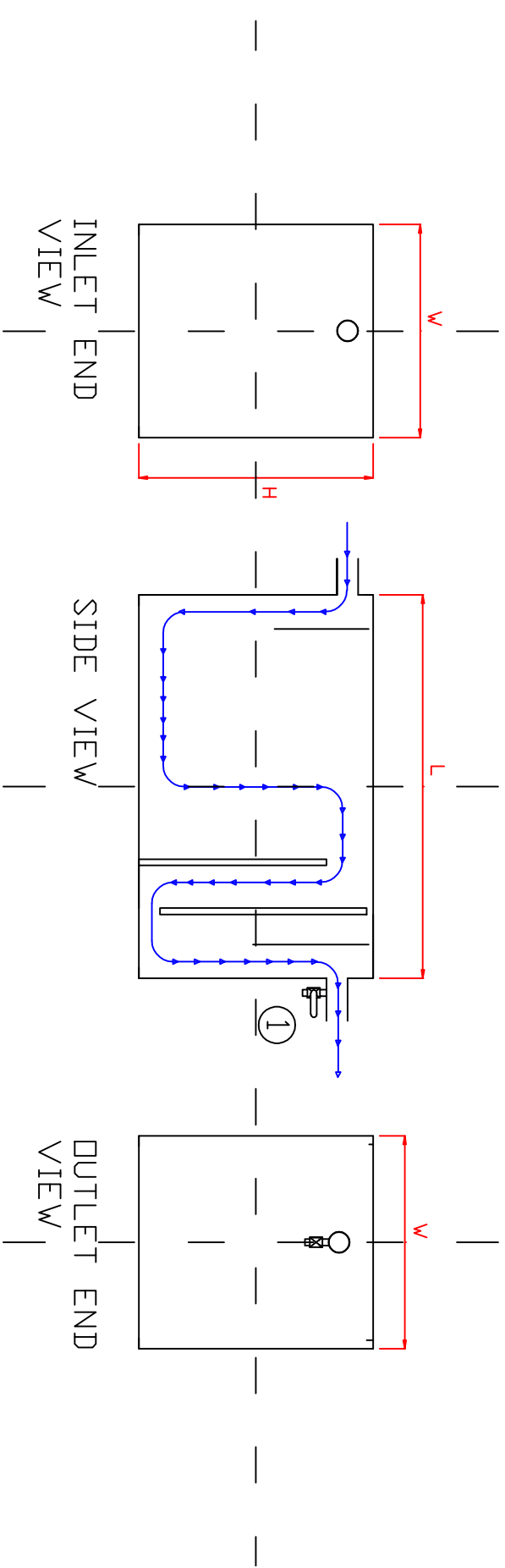


Sketch by MC NULTY ENGINEERING



- 1. Sample valve
- All traps are based on working capacity in liters
- Traps can have hinged with snap clamps
- All traps have an air and water tight seal
- All traps are fully breathable to stop any syphoning
- Water course in blue

LITERS	L	H	W	INLET /OUTLET
100	740	520	500	50/110
200	980	550	600	50/110
400	1200	800	650	110
700	1500	950	800	110
1000	1500	1050	1000	110
1500	2000	1200	1000	110